



Virginia Crime Trends 2000 - 2009

Department of Criminal Justice Services
Criminal Justice Research Center
September 2010

Summary of Virginia Crime Trends 2000-2009

Violent Index Crime Rate

- Violent crime trended downward in both Virginia and the U.S. during the last decade. From 2000 to 2009 violent crime rates decreased in Virginia by 19% and in the U.S. by 15%.
- Virginia's violent crime rate has been below national rates every year during the last decade.
- In 2009, Virginia had the 7th lowest violent crime rate out of the 50 states (Virginia ranked 44 out of 50).
- Virginia violent index crime rates by crime type trended as follows: murder/nonnegligent manslaughter rate down by 22%, forcible rape rate decreased by 18%, robbery rate decreased by 14%, aggravated assault rate declined by 23%.

Property Index Crime Rate

- Property crime rates trended downward in both Virginia and the U.S. over the decade. From 2000 to 2009 the property crime rate in Virginia declined by 12% and the U.S. rate by 16%.
- Virginia's property index crime rate has been consistently below national rates.
- In 2009, 37 out of the 50 states had a higher property crime rate than Virginia (Virginia ranked 38 out of 50.)
- Property crime rates in Virginia by crime type trended as follows: burglary rate down by 6%, larceny rate down by 14%, motor vehicle theft rate declined by 46%.

Drug Arrest Rate

- From 2000 to 2009 the drug arrest rate in Virginia increased by almost 13%.
- In 2009, Virginia's drug arrest rate ranked 35 out of 50 states (rank 1=highest rate).

Note

This document presents Virginia index crime and drug arrests rates from two different sources: *Crime In The United States (U.S.)*, by the U.S. Department of Justice Federal Bureau of Investigation (FBI), and the Virginia Department of Criminal Justice Services (DCJS) Criminal Justice Research Center. Both agencies use criminal incident reports submitted by local law enforcement agencies to the Incident-Based Crime Reporting Repository System managed by the Virginia Department of State Police (VSP) to calculate Virginia crime and arrest rates, but the rates reported by each differ slightly. The differences are largely attributed to:

- (1) Different methodologies used to estimate missing or underreported crime or arrest data.
- (2) Different sources for population data used to calculate offense rates. FBI calculates population estimates using U.S. Census Bureau estimated data and population growth rates. DCJS uses estimates produced by the Weldon Cooper Center for Public Service at the University of Virginia.
- (3) The FBI may "freeze" the crime data later than DCJS resulting in small differences in the number of crimes used to calculate the rates.

For valid comparisons, any discussion of Virginia crime and arrest rates versus national rates or rates of the other states use Virginia rates reported by the FBI in *Crime In The U.S.* Any discussion of crime and arrest rates for regions or localities within Virginia use rates calculated by DCJS.

Virginia Violent Index Crime Rate, 2000 – 2009

Definitions

Violent index crimes are murder/nonnegligent manslaughter, forcible rape, robbery, and aggravated assault.

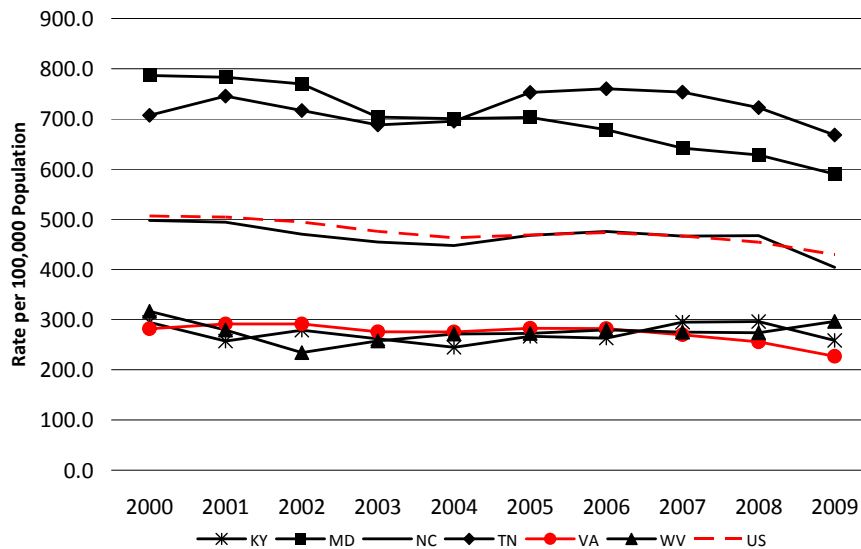
- Murder/nonnegligent manslaughter is the willful (nonnegligent) killing of one human being by another.
- Forcible rape is the carnal knowledge of a person, forcibly and/or against that person's will; or not forcibly or against the person's will where the victim is incapable of giving consent because of his/her temporary or permanent mental or physical incapacity. Forcible rape excludes statutory rape.
- Robbery is the taking, or attempting to take, anything of value under confrontational circumstances from the control, custody or care of another person by force or threat of force or violence and/or by putting the victim in fear of immediate harm.
- Aggravated assault is defined as an unlawful attack by one person upon another where the offender uses a weapon or displays it in a threatening manner, or the victim suffers obvious severe or aggravated bodily injury involving apparent broken bones, loss of teeth, possible internal injury, severe laceration, or loss of consciousness. This also includes assault with disease.

Violent crime rate is the number of violent crimes reported per 100,000 population.

Virginia, U.S. and Border States Violent Index Crime Rate, 2000-2009

Source: FBI

Total Violent Index Crime Rate By State and Year



	Percent Change	
	2000 - 2009	2008 - 2009
KY	-12.2	-13.4
MD	-25.0	-5.7
NC	-18.8	-13.3
TN	-5.6	-7.3
VA	-19.5	-11.8
WV	-6.3	+7.0
US	-15.2	-6.1

Violent crime rates have been trending downward in both Virginia and the U.S. over the last decade. During this time Virginia’s violent crime rates have been consistently below national rates and all but two bordering states.

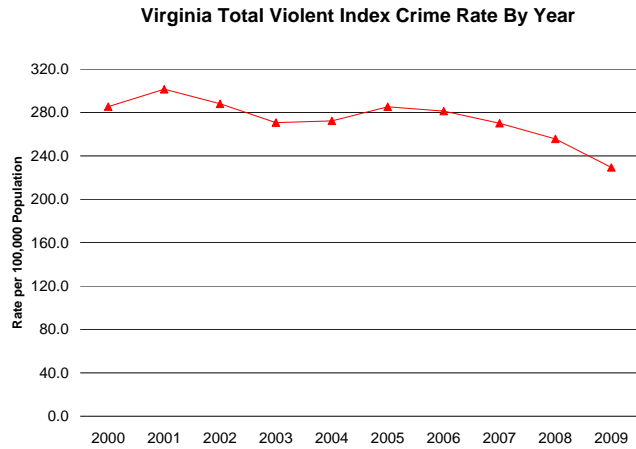
From 2000 to 2009 the violent crime rate in Virginia decreased by 19% and by 15% in the U.S.

The violent crime rate in Virginia decreased by almost 12% from 2008 to 2009 and decreased by 6% nationwide.

In 2009 Virginia had the lowest violent crime rate of all shown above. Virginia’s 2009 violent crime rate compared to the other 49 states can be found in Appendix D.

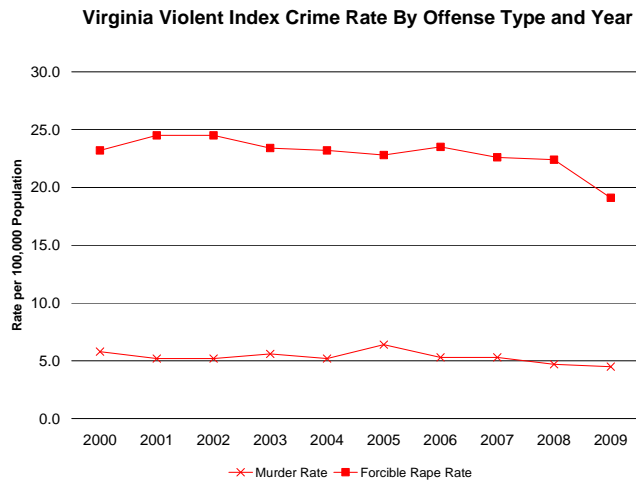
Virginia Violent Index Crime Rate by Offense Type, 2000-2009

Source: DCJS



	Percent Change	
	2000 - 2009	2008 - 2009
Total Violent Index Crime Rate	-19.7	-10.3

Total violent index crime rates decreased from 2000 to 2009 and from 2008 to 2009.

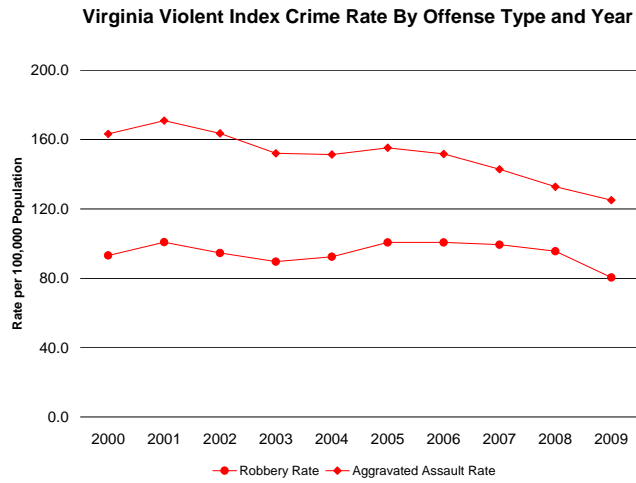


	Percent Change	
	2000 - 2009	2008 - 2009
Murder Rate	-22.4	-4.3
Forcible Rape Rate	-17.7	-14.7

Murder and forcible rape offense rates both decreased from 2000 to 2009 and from 2008 to 2009.

Virginia Violent Index Crime Rate by Offense Type, 2000-2009

Source: DCJS



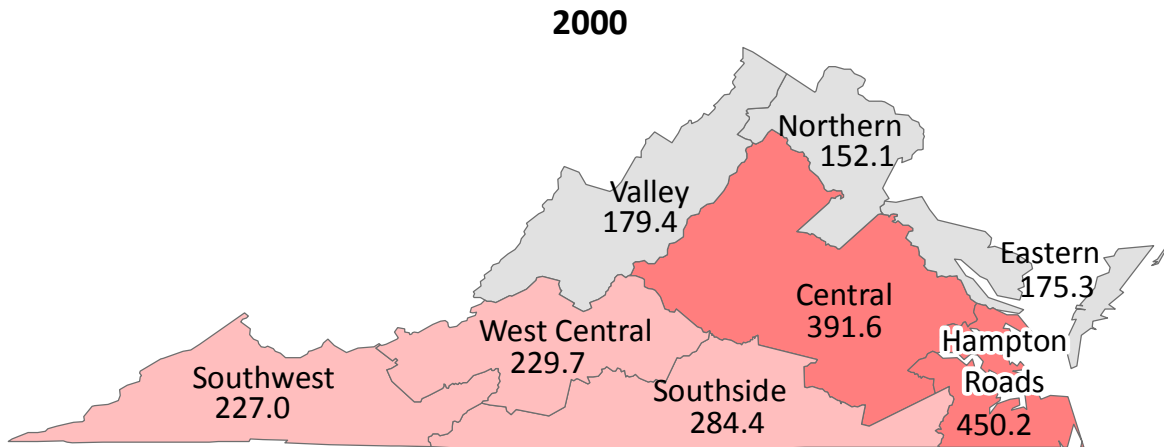
	Percent Change	
	2000 - 2009	2008- 2009
Robbery Rate	-13.6	-15.8
Aggravated Assault Rate	-23.4	-5.8

The robbery offense rate decreased both from 2000 to 2009 and from 2008 to 2009. Robbery was the violent offense with the largest 1-year rate decrease.

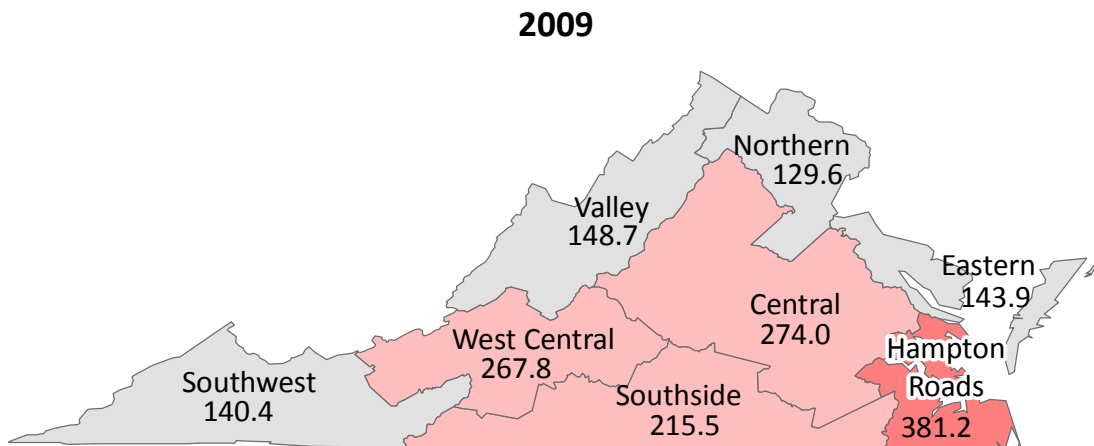
The aggravated assault rate declined from 2000 to 2009 and from 2008 to 2009. Aggravated assault was the violent offense with the largest 10-year rate decrease.

Virginia Violent Index Crime Rate by Region, 2000-2009

Source: DCJS



In 2000 the statewide violent index crime rate was 285.4.



In 2009 the statewide violent index crime rate was 229.3, an almost 20% decrease from the 2000 rate.

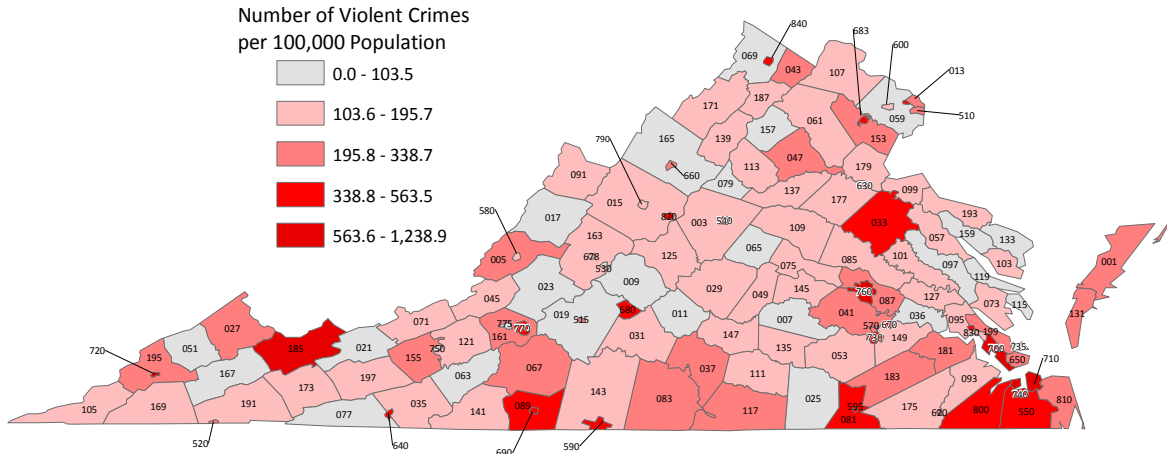
From 2000 to 2009 the violent index crime rate declined in all regions of Virginia except the West Central region.

The Hampton Roads region had the highest violent index crime rate in 2000 and 2009. The Northern region had the lowest violent index crime rate in 2000 and 2009.

Virginia Violent Index Crime Rate by Locality, 2000-2009

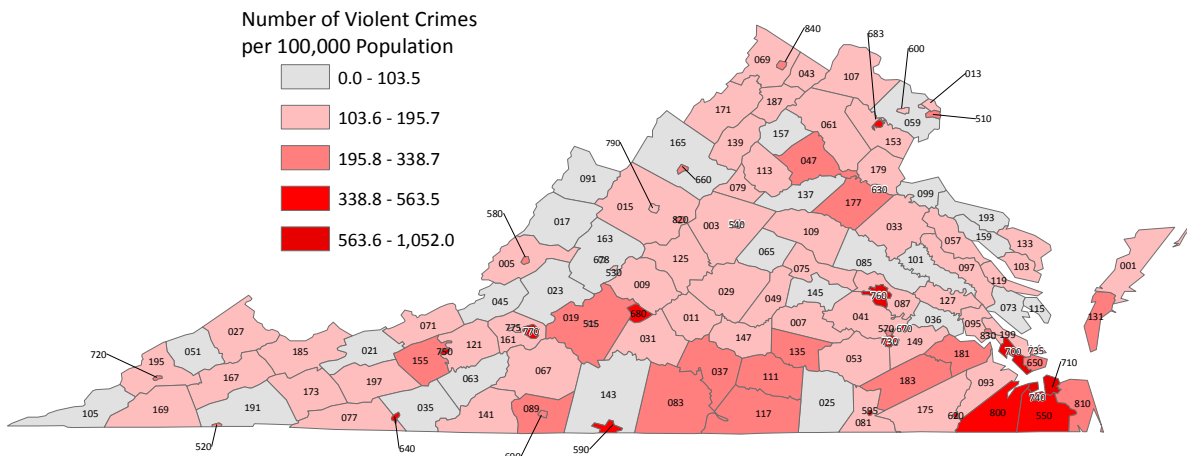
Source: DCJS

2000



In 2000 the city of Richmond was the locality with the highest violent index crime rate statewide and Charles City County had the lowest violent index crime rate statewide (Charles City County reported zero violent crimes in 2000).

2009



Virginia Property Index Crime Rate, 2000-2009

Definitions

Property index crimes are burglary, larceny and motor vehicle theft.

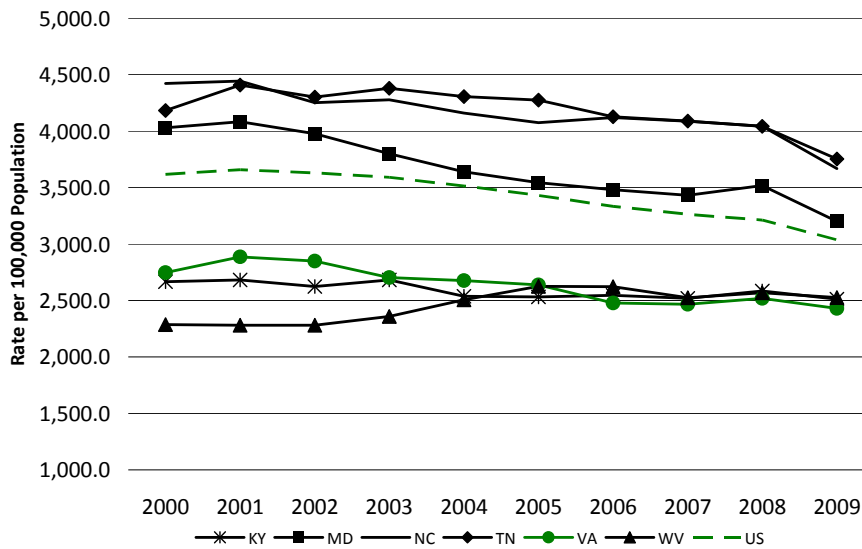
- Burglary is defined as the unlawful entry into a building or other structure with the intent to commit a felony or a theft.
- Larceny is the unlawful taking, carrying, leading or riding away of property from the possession, or constructive possession, or another person.
- Motor vehicle theft is defined as the theft of a self-propelled vehicle that runs on the surface of land and not on rails. Such vehicles include automobiles, buses, recreational vehicles, trucks and other motor vehicles, e.g., motorcycles, trail bikes, golf carts, snowmobiles and mopeds.

Property crime rate is the number of property crimes reported per 100,000 population.

Virginia, U.S. and Border States Property Index Crime Rates, 2000-2009

Source: FBI

Total Property Index Crime Rate By State and Year



Percent Change

	2000 - 2009	2008 - 2009
KY	-5.7	-5.7
MD	-20.6	-8.6
NC	-17.0	-9.0
TN	-10.3	-6.9
VA	-11.6	-3.7
WV	+10.5	-1.1
US	-16.1	-5.5

Property crime rates have been trending downward in both Virginia and the U.S. over the last decade. During this time Virginia's property crime rates have been consistently below national rates and all but two bordering states.

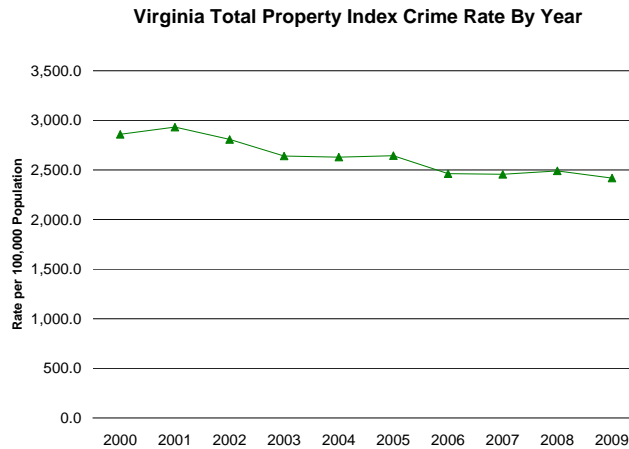
From 2000 to 2009 the property crime rate in Virginia decreased by almost 12% and by 16% in the U.S.

The property crime rate in Virginia decreased by almost 4% from 2008 to 2009 and decreased by 5% across the U.S.

In 2009 Virginia reported the lowest property crime rate of all shown above. Virginia's 2009 property crime rate ranked against the other 49 states can be found in Appendix D.

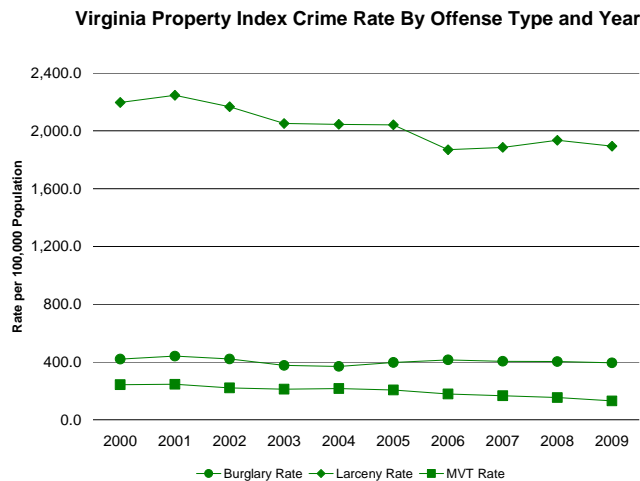
Virginia Property Index Crime Rate by Offense Type, 2000-2009

Source: DCJS



	Percent Change	
	2000 - 2009	2008 - 2009
Total Property Index Crime Rate	-15.4	-2.9

Total property index crime rate decreased by 15% from 2000 to 2009 and decreased by almost 3% from 2008 to 2009.

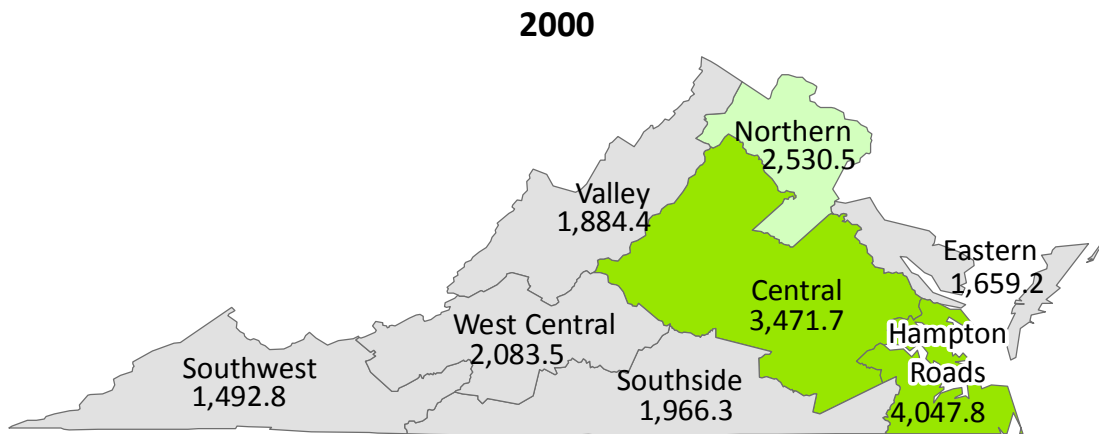


	Percent Change	
	2000 - 2009	2008 - 2009
Burglary Rate	-6.3	-2.3
Larceny Rate	-13.8	-2.1
Motor Vehicle Theft Rate	-46.2	-15.3

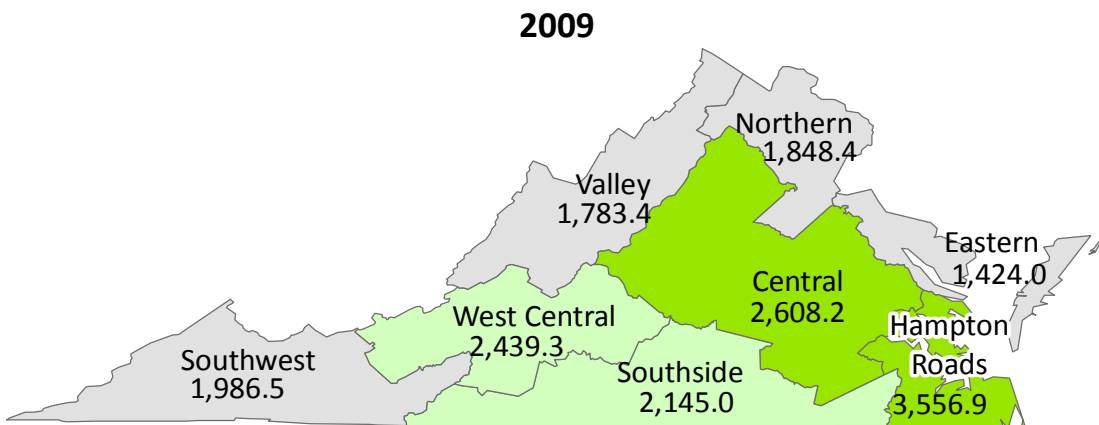
Each of the property index crime rates decreased across Virginia over the decade 2000 to 2009 and from 2008 to 2009. Motor vehicle theft rate had the largest 10-year decline of all property offenses.

Virginia Property Index Crime Rate by Region, 2000-2009

Source: DCJS



The 2000 statewide property crime rate was 2,860.0.



In 2009 Virginia's property crime rate was 2,418.4, a 15% decrease from 2000.

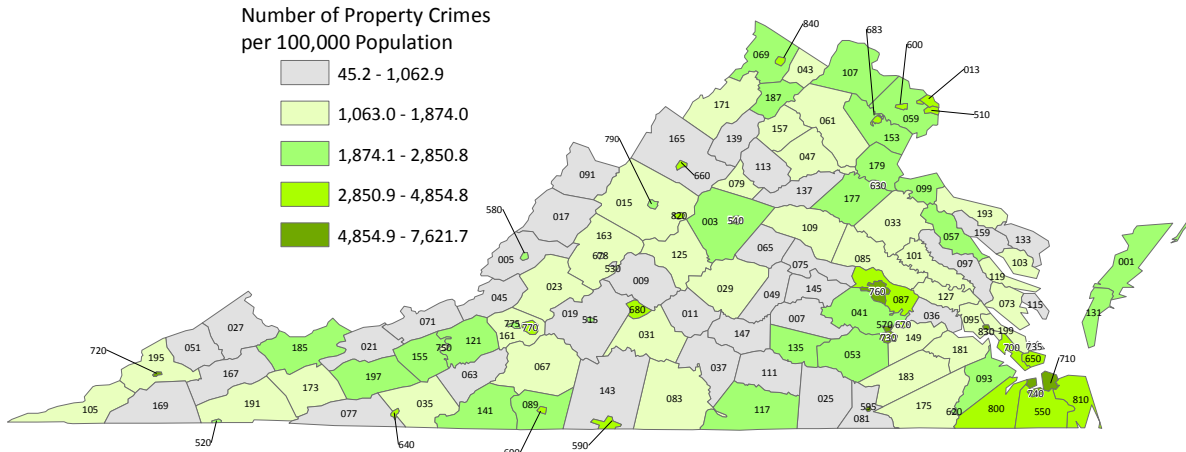
From 2000 to 2009 the property crime rate declined in all regions of Virginia except the Southwest, West Central and Southside regions.

In 2000 the Southwest and Hampton Roads regions had the lowest and highest property crime rates, respectively. In 2009 the Eastern region had the lowest property crime rate and Hampton Roads had the highest.

Virginia Property Index Crime Rate by Locality, 2000-2009

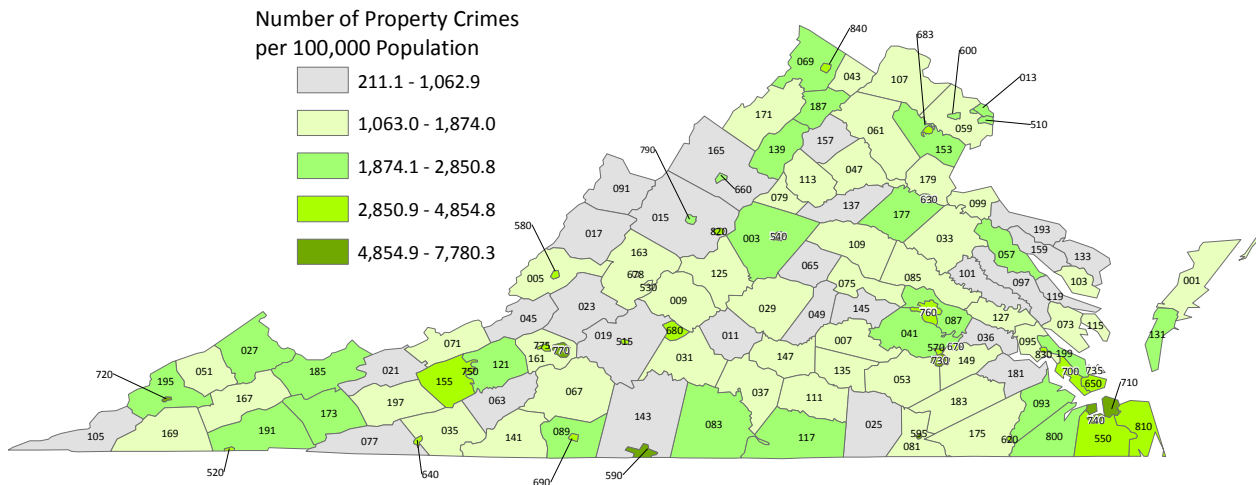
Source: DCJS

2000



In 2000 Richmond City was the locality with the highest property crime rate statewide and King & Queen County had the lowest property crime rate statewide. Among counties only, Henrico County had the highest property crime rate in 2000.

2009



In 2009 Petersburg had the highest property crime rate statewide and Craig County had the lowest property crime rate statewide. Pulaski County had the highest property crime rate among counties in 2009.

Appendix B contains property crime rates for each locality in 2000 and 2009 and how each locality ranked against all others in each year.

Virginia Drug Arrest Rate, 2000-2009

Definitions

Drug offenses are defined as the unlawful cultivation, manufacture, distribution, sale, purchase, use, possession, transportation, or importation of any controlled drug or narcotic substance or the unlawful manufacture, sale, purchase, possession, or transportation of equipment or devices utilized in preparing and/or using drugs or narcotics.

The drug arrest rate is the number of arrests for drug offenses per 100,000 population.

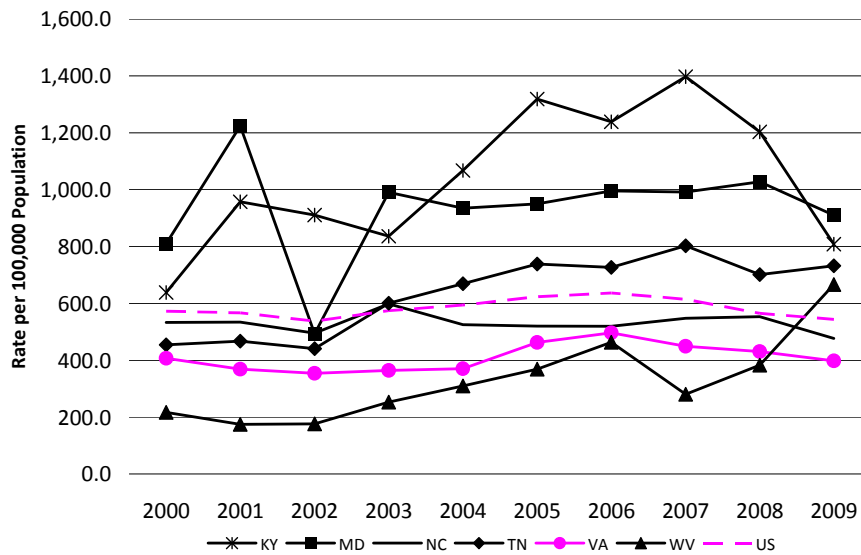
The total drug arrest rate includes arrests of both juveniles and adults.

Drug arrest statistics can reflect law enforcement anti-drug activities and are not an accurate indicator of drug prevalence.

Virginia, U.S. and Border States Drug Arrest Rates, 2000-2009

Source: FBI

Total Drug Arrest Rate By State and Year



	Percent Change	
	2000 – 2009	2008 – 2009
KY	+26.7	-32.8
MD	+12.3	-11.5
NC	-10.6	-13.8
TN	+61.1	+4.5
VA	-2.2	-7.6
WV	+206.9	+74.0
US	-4.9	-3.6

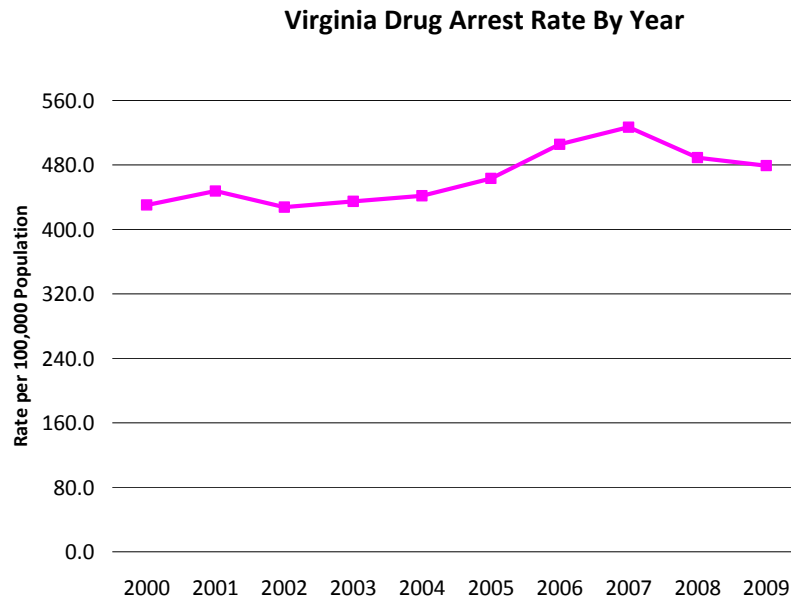
Although Virginia and U.S. drug arrests rose and fell between 2000 and 2009, rates for both were down in 2009 compared to 2000.

Virginia's drug arrest rate over the decade was consistently below national rates and the rates for all but one of the bordering states (West Virginia).

From 2008 to 2009 the drug arrest rate in Virginia decreased by almost 8% compared to a 4% decrease nationally.

Virginia Drug Arrest Rate, 2000-2009

Source: DCJS



	% Change	
	2000 – 2009	2008 – 2009
Drug Arrest Rate	12.7%	-0.8%

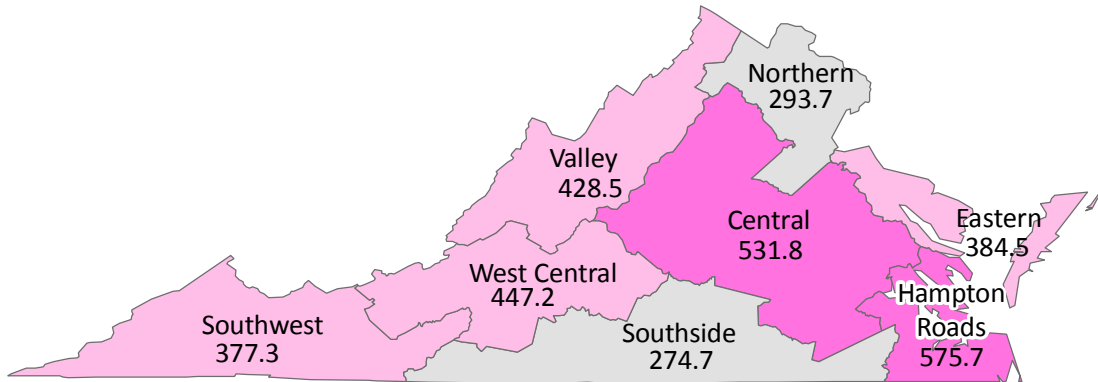
Virginia’s drug arrest rate increased almost 13% from 2000 to 2009 and decreased slightly from 2008 to 2009.

Note: Since 2000, FBI has consistently underreported the total number of drug arrests in Virginia compared to the total number reported by VSP (DCJS uses the total number of drug arrests reported by VSP when calculating the statewide drug arrest rate). It is believed the underreporting is the result of a software issue at the FBI data processing center that rejects some drug offense incidents and arrests submitted to the FBI. Also, FBI uses a different population estimate to calculate drug arrest rates than DCJS. As a result, Virginia total drug arrest rates calculated using FBI data are lower in magnitude and differ in trend from rates calculated by DCJS.

Virginia Drug Arrest Rate by Region, 2000-2009

Source: DCJS

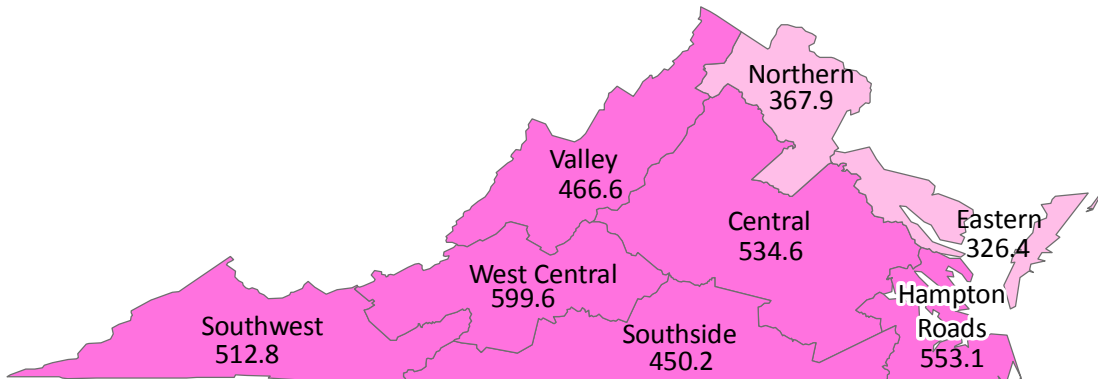
2000



The 2000 statewide drug arrest rate was 430.4.

In 2000 the Southside and Hampton Roads regions had the lowest and highest drug arrest rates, respectively.

2009



In 2009 the statewide drug arrest rate was 479.6, an 11% increase from 2000.

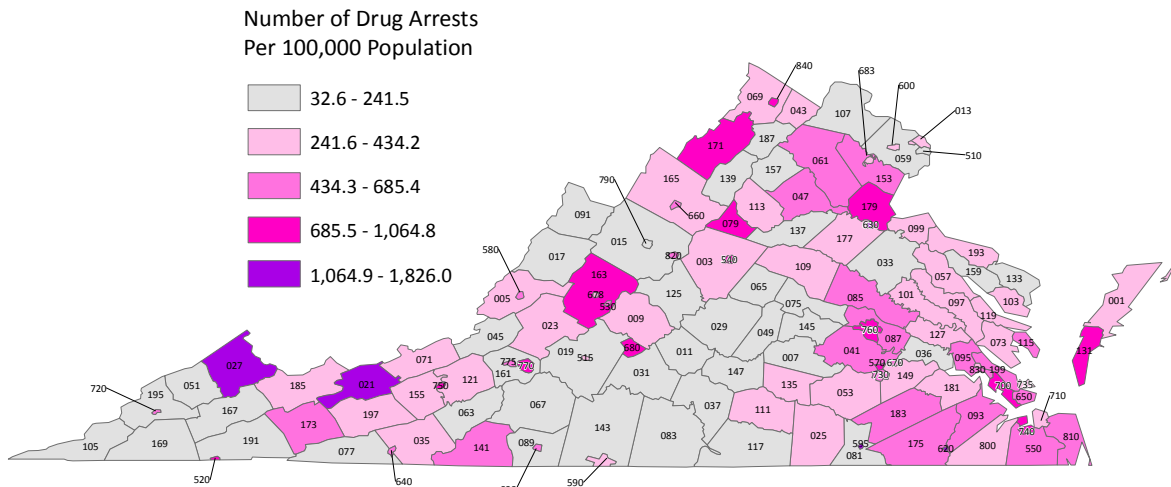
In 2009 the Eastern region had the lowest drug arrest rate and West Central had the highest.

From 2000 to 2009 the drug arrest rate increased in all regions of Virginia except the Eastern and Hampton Roads regions. Southwest and Southside regions had the largest increases in drug arrest rates: 36% and 64%, respectively.

Drug Arrest Rate by Locality, 2000-2009

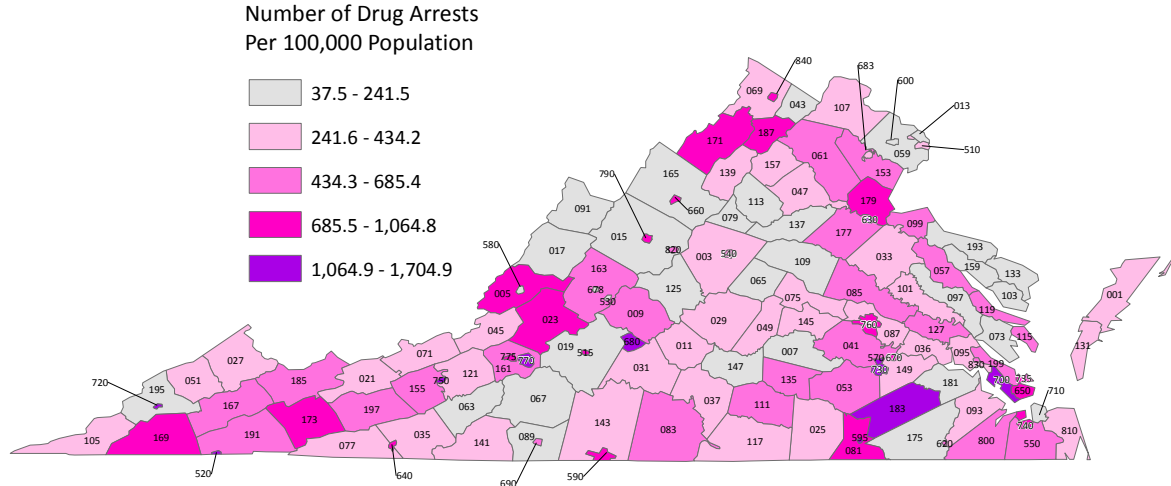
Source: DCJS

2000



In 2000 the city of Fredericksburg was the locality with the highest drug arrest rate statewide and Floyd County had the lowest drug arrest rate statewide. Buchanan County had the highest drug arrest rate among counties-only in 2000.

2009



Colonial Heights was the locality with the highest drug arrest rate statewide in 2009 and Floyd County had the lowest drug arrest rate statewide. Sussex County had the highest drug arrest rate among counties-only in 2009.

Appendix C shows the drug arrest rate by locality in 2000 and 2009 and how each locality ranked against all others by year. Localities are labelled by their Federal Information Processing Standards code (aka FIPS code) in the maps above and in Appendix C.

Appendix A – Virginia Violent Index Crime Rate and Ranking by Locality, 2000 and 2009 Source: DCJS

Overall Rank: 1=highest crime rate statewide, 134=lowest crime rate statewide

(Note: 2000 rank includes city of Clifton Forge; rank 135 will be lowest 2000 overall ranking. Clifton Forge reverted to town status in 2001).

County Rank: 1=highest crime rate among counties, 95=lowest crime rate among the 95 counties

Counties (continued on next page)

FIPS	Locality	2000 Rate	2009 Rate	2000 Overall Rank	2009 Overall Rank	2000 County Rank	2009 County Rank
001	Accomack Co	245.4	194.5	40	45	12	14
003	Albemarle Co	150.9	113.4	74	90	40	54
005	Alleghany Co	331.1	130.3	30	79	6	44
007	Amelia Co	70.2	106.5	121	101	85	64
009	Amherst Co	103.5	112.7	108	91	72	55
011	Appomattox Co	51.1	109.2	127	97	88	60
013	Arlington Co	207.4	152.8	52	64	21	32
015	Augusta Co	117.4	117.9	100	88	65	52
017	Bath Co	19.8	42.1	133	131	93	93
019	Bedford Co	96.1	243.8	113	33	77	6
021	Bland Co	58.2	14.0	125	132	87	94
023	Botetourt Co	101.7	60.1	110	122	74	84
025	Brunswick Co	70.6	91.9	120	113	84	76
027	Buchanan Co	218.7	183.0	47	47	16	16
029	Buckingham Co	160.0	178.4	68	50	35	19
031	Campbell Co	146.8	182.2	78	48	44	17
033	Caroline Co	370.7	162.9	26	58	4	26
035	Carroll Co	143.6	85.8	82	114	47	77
036	Charles City Co	0.0	42.9	135	129	95	91
037	Charlotte Co	232.5	221.0	43	36	14	8
041	Chesterfield Co	213.9	169.1	49	55	18	23
043	Clarke Co	332.0	110.6	29	94	5	58
045	Craig Co	117.9	76.8	99	118	64	80
047	Culpeper Co	201.4	198.2	55	43	24	13
049	Cumberland Co	177.4	120.1	61	87	29	51
051	Dickenson Co	42.7	103.2	128	105	89	68
053	Dinwiddie Co	195.7	191.1	56	46	25	15
057	Essex Co	140.2	127.2	86	84	51	49
059	Fairfax Co	88.8	63.6	116	120	80	82
061	Fauquier Co	163.2	128.5	65	82	32	47
063	Floyd Co	64.9	51.9	123	126	86	88
065	Fluvanna Co	84.8	71.3	117	119	81	81
067	Franklin Co	203.0	102.9	54	106	23	69
069	Frederick Co	74.3	130.1	118	80	82	45
071	Giles Co	120.1	108.1	97	100	62	63
073	Gloucester Co	120.8	95.5	94	112	59	75
075	Goochland Co	154.2	121.3	72	86	38	50
077	Grayson Co	88.9	172.4	115	53	79	21
079	Greene Co	91.8	149.1	114	69	78	37
081	Greensville Co	380.6	136.5	25	76	3	42
083	Halifax Co	243.6	202.3	41	40	13	10
085	Hanover Co	106.6	84.2	107	115	71	78
087	Henrico Co	229.9	170.0	44	54	15	22
089	Henry Co	388.4	258.4	23	31	2	4
091	Highland Co	118.3	0.0	98	134	63	95
093	Isle of Wight Co	137.9	137.2	87	75	52	41
095	James City Co	141.4	111.5	85	92	50	56
097	King & Queen Co	30.2	149.8	131	66	91	34

Appendix A – Virginia Violent Index Crime Rate and Ranking by Locality, 2000 and 2009 Source: DCJS

Overall Rank: 1=highest crime rate statewide, 134=lowest crime rate statewide

(Note: 2000 rank includes city of Clifton Forge; rank 135 will be lowest 2000 overall ranking. Clifton Forge reverted to town status in 2001).

County Rank: 1=highest crime rate among counties, 95=lowest crime rate among the 95 counties

Counties (continued)

FIPS	Locality	2000 Rate	2009 Rate	2000 Overall Rank	2009 Overall Rank	2000 County Rank	2009 County Rank
099	King George Co	172.6	100.5	63	108	31	71
101	King William Co	129.3	43.3	91	128	56	90
103	Lancaster Co	129.7	161.1	90	60	55	28
105	Lee Co	161.1	78.1	67	117	34	79
107	Loudoun Co	177.5	108.7	60	98	28	61
109	Louisa Co	113.2	106.3	103	103	68	66
111	Lunenburg Co	159.7	218.6	69	37	36	9
113	Madison Co	111.8	129.0	104	81	69	46
115	Mathews Co	97.8	63.1	112	121	76	83
117	Mecklenburg Co	271.8	201.2	36	42	10	12
119	Middlesex Co	100.7	153.7	111	63	75	31
121	Montgomery Co	150.7	135.7	75	77	41	43
125	Nelson Co	145.4	109.5	80	95	45	59
127	New Kent Co	148.6	106.4	77	102	43	65
131	Northampton Co	252.0	201.8	38	41	11	11
133	Northumberland Co	40.8	149.2	129	68	90	36
135	Nottoway Co	184.4	283.1	59	26	27	1
137	Orange Co	162.3	44.3	66	127	33	89
139	Page Co	116.5	115.8	101	89	66	53
141	Patrick Co	113.4	164.4	102	57	67	25
143	Pittsylvania Co	152.2	97.3	73	110	39	73
145	Powhatan Co	120.7	53.4	96	125	61	87
147	Prince Edward Co	136.9	139.5	88	73	53	40
149	Prince George Co	120.8	104.2	95	104	60	67
153	Prince William Co	203.3	179.1	53	49	22	18
155	Pulaski Co	213.5	269.3	50	30	19	3
157	Rappahannock Co	14.3	42.5	134	130	94	92
159	Richmond Co	102.2	102.1	109	107	73	70
161	Roanoke Co	213.3	153.8	51	62	20	30
163	Rockbridge Co	144.2	95.9	81	111	46	74
165	Rockingham Co	28.1	55.3	132	124	92	86
167	Russell Co	71.8	108.7	119	99	83	62
169	Scott Co	149.6	164.6	76	56	42	24
171	Shenandoah Co	156.8	110.8	71	93	37	57
173	Smyth Co	142.1	149.6	83	67	48	35
175	Southampton Co	131.6	161.1	89	59	54	27
177	Spotsylvania Co	128.3	247.1	92	32	57	5
179	Stafford Co	141.7	144.6	84	72	49	39
181	Surry Co	278.2	279.2	34	27	8	2
183	Sussex Co	295.9	221.0	33	35	7	7
185	Tazewell Co	773.6	152.7	7	65	1	33
187	Warren Co	126.6	178.2	93	51	58	20
191	Washington Co	111.5	99.2	105	109	70	72
193	Westmoreland Co	191.4	57.1	57	123	26	85
195	Wise Co	218.0	158.5	48	61	17	29
197	Wythe Co	173.9	146.3	62	70	30	38
199	York Co	277.1	127.3	35	83	9	48

Appendix A – Virginia Violent Index Crime Rate and Ranking by Locality, 2000 and 2009 Source: DCJS

Overall Rank: 1=highest crime rate statewide, 134=lowest crime rate statewide

(Note: 2000 rank includes city of Clifton Forge; rank 135 will be lowest 2000 overall ranking. Clifton Forge reverted to town status in 2001).

City Rank: 1=highest crime rate among cities, 39=lowest crime rate among the 39 cities

(Note: 2000 rank includes city of Clifton Forge; rank 40 will be lowest 2000 city ranking).

Cities

FIPS	Locality	2000 Rate	2009 Rate	2000 Overall Rank	2009 Overall Rank	2000 City Rank	2009 City Rank
510	Alexandria C	246.3	211.7	39	38	28	29
515	Bedford C	269.9	328.8	37	20	27	20
520	Bristol C	322.5	314.7	32	24	26	24
530	Buena Vista C	63.0	137.3	124	74	38	34
540	Charlottesville C	1,002.5	612.6	4	8	4	8
550	Chesapeake C	429.8	439.6	22	14	21	14
560	Clifton Forge C	349.7	n/a	27	n/a	23	n/a
570	Colonial Heights C	224.9	277.8	45	28	30	26
580	Covington C	111.1	335.8	106	19	36	19
590	Danville C	495.8	384.7	17	16	16	16
595	Emporia C	1,182.7	733.7	2	4	2	4
600	Fairfax C	158.2	109.3	70	96	34	37
610	Falls Church C	539.7	145.2	15	71	14	33
620	Franklin C	239.6	370.7	42	17	29	17
630	Fredericksburg C	544.6	497.8	13	11	12	11
640	Galax C	482.7	426.6	18	15	17	15
650	Hampton C	325.7	315.7	31	23	25	23
660	Harrisonburg C	338.7	290.0	28	25	24	25
670	Hopewell C	834.9	887.4	6	2	6	2
678	Lexington C	145.6	13.7	79	133	35	39
680	Lynchburg C	450.4	471.2	21	13	20	13
683	Manassas C	384.2	480.5	24	12	22	12
685	Manassas Park C	165.2	78.4	64	116	33	38
690	Martinsville C	557.9	269.5	12	29	11	27
700	Newport News C	746.0	567.4	8	9	7	9
710	Norfolk C	711.2	649.8	10	7	9	7
720	Norton C	717.2	197.3	9	44	8	31
730	Petersburg C	1,111.4	1,009.4	3	1	3	1
735	Poquoson C	69.2	235.7	122	34	37	28
740	Portsmouth C	974.5	720.5	5	5	5	5
750	Radford C	31.5	528.3	130	10	40	10
760	Richmond C	1,185.1	828.9	1	3	1	3
770	Roanoke C	515.2	685.9	16	6	15	6
775	Salem C	56.6	127.2	126	85	39	36
790	Staunton C	184.5	132.1	58	78	32	35
800	Suffolk C	541.8	348.2	14	18	13	18
810	Virginia Beach C	220.8	209.9	46	39	31	30
820	Waynesboro C	563.5	323.5	11	22	10	22
830	Williamsburg C	458.4	176.8	20	52	19	32
840	Winchester C	474.9	326.0	19	21	18	21

Appendix B – Virginia Property Index Crime Rate and Ranking by Locality, 2000 and 2009 Source: DCJS

Overall Rank: 1=highest crime rate statewide, 134=lowest crime rate statewide

(Note: 2000 rank includes city of Clifton Forge; rank 135 will be lowest 2000 overall ranking. Clifton Forge reverted to town status in 2001).

County Rank: 1=highest crime rate among counties, 95=lowest crime rate among the 95 counties

Counties (continued on next page)

FIPS	Locality	2000 Rate	2009 Rate	2000 Overall Rank	2009 Overall Rank	2000 County Rank	2009 County Rank
001	Accomack Co	2,117.2	1,753.4	52	61	17	27
003	Albemarle Co	2,399.4	2,118.7	43	43	9	9
005	Alleghany Co	714.5	1,137.1	119	100	80	62
007	Amelia Co	701.8	1,102.9	123	102	84	64
009	Amherst Co	1,062.9	1,613.9	98	69	61	35
011	Appomattox Co	890.2	983.0	106	117	69	79
013	Arlington Co	3,353.9	2,230.3	29	42	2	8
015	Augusta Co	1,104.9	1,024.8	96	110	59	72
017	Bath Co	574.5	695.4	129	129	90	90
019	Bedford Co	801.7	1,053.0	113	109	75	71
021	Bland Co	916.9	814.4	105	126	68	87
023	Botetourt Co	1,137.9	1,054.1	92	108	55	70
025	Brunswick Co	700.4	886.3	124	120	85	82
027	Buchanan Co	919.3	1,988.5	104	51	67	17
029	Buckingham Co	1,132.9	1,534.4	94	75	57	39
031	Campbell Co	1,593.6	1,636.1	68	67	32	33
033	Caroline Co	1,179.9	1,444.5	89	80	52	43
035	Carroll Co	1,388.3	1,445.6	79	79	43	42
036	Charles City Co	57.8	729.4	134	128	94	89
037	Charlotte Co	866.0	1,167.9	110	98	72	60
041	Chesterfield Co	2,709.5	2,440.2	35	37	3	5
043	Clarke Co	1,628.2	1,630.8	67	68	31	34
045	Craig Co	275.0	211.1	133	134	93	95
047	Culpeper Co	1,841.7	1,437.3	63	83	28	46
049	Cumberland Co	876.1	590.3	109	131	71	92
051	Dickenson Co	713.6	1,304.7	120	91	81	53
053	Dinwiddie Co	2,274.5	1,690.6	46	64	11	30
057	Essex Co	1,972.2	1,935.9	57	55	22	21
059	Fairfax Co	2,190.8	1,693.3	51	63	16	29
061	Fauquier Co	1,498.0	1,239.2	74	95	38	57
063	Floyd Co	1,009.1	998.8	101	115	64	77
065	Fluvanna Co	877.9	761.7	107	127	70	88
067	Franklin Co	1,419.0	1,444.3	77	81	41	44
069	Frederick Co	2,072.3	1,884.8	53	57	18	23
071	Giles Co	978.6	1,555.7	102	73	65	37
073	Gloucester Co	1,667.6	1,304.3	65	92	30	54
075	Goochland Co	741.3	1,082.1	117	105	79	67
077	Grayson Co	633.8	880.4	127	122	88	84
079	Greene Co	1,259.5	1,220.2	85	96	49	58
081	Greensville Co	743.9	1,164.6	116	99	78	61
083	Halifax Co	1,435.1	2,397.3	75	39	39	7
085	Hanover Co	1,751.6	1,334.4	64	89	29	51
087	Henrico Co	3,919.6	2,835.5	19	30	1	2
089	Henry Co	2,333.9	2,011.3	44	48	10	14
091	Highland Co	709.8	880.1	121	123	82	85
093	Isle of Wight Co	1,967.8	1,952.7	58	54	23	20
095	James City Co	1,424.1	1,533.9	76	76	40	40
097	King & Queen Co	45.2	958.8	135	118	95	80

Appendix B – Virginia Property Index Crime Rate and Ranking by Locality, 2000 and 2009 Source: DCJS

Overall Rank: 1=highest crime rate statewide, 134=lowest crime rate statewide

(Note: 2000 rank includes city of Clifton Forge; rank 135 will be lowest 2000 overall ranking. Clifton Forge reverted to town status in 2001).

County Rank: 1=highest crime rate among counties, 95=lowest crime rate among the 95 counties

Counties (continued)

FIPS	Locality	2000 Rate	2009 Rate	2000 Overall Rank	2009 Overall Rank	2000 County Rank	2009 County Rank
099	King George Co	2,273.4	1,439.9	47	82	12	45
101	King William Co	1,498.6	605.5	73	130	37	91
103	Lancaster Co	1,132.5	1,289.2	95	93	58	55
105	Lee Co	1,852.6	851.7	62	124	27	86
107	Loudoun Co	2,011.2	1,264.3	56	94	21	56
109	Louisa Co	1,151.1	1,114.6	91	101	54	63
111	Lunenburg Co	798.7	1,085.3	114	104	76	66
113	Madison Co	774.8	1,075.2	115	106	77	68
115	Mathews Co	814.6	1,094.6	112	103	74	65
117	Mecklenburg Co	2,229.8	2,105.0	49	44	14	10
119	Middlesex Co	1,258.6	1,056.5	86	107	50	69
121	Montgomery Co	1,965.8	2,080.0	59	45	24	11
125	Nelson Co	1,523.0	1,772.1	72	59	36	25
127	New Kent Co	1,567.4	1,646.4	70	66	34	32
131	Northampton Co	2,222.6	1,995.5	50	49	15	15
133	Northumberland Co	668.9	992.4	126	116	87	78
135	Nottoway Co	2,066.8	1,755.5	54	60	19	26
137	Orange Co	1,039.4	920.8	99	119	62	81
139	Page Co	1,031.2	1,989.7	100	50	63	16
141	Patrick Co	2,030.2	1,535.8	55	74	20	38
143	Pittsylvania Co	702.9	999.8	122	114	83	76
145	Powhatan Co	974.2	885.9	103	121	66	83
147	Prince Edward Co	476.7	1,213.7	131	97	92	59
149	Prince George Co	1,174.4	1,307.5	90	90	53	52
153	Prince William Co	2,574.0	1,959.8	37	53	4	19
155	Pulaski Co	2,510.9	3,351.2	39	24	6	1
157	Rappahannock Co	1,188.6	1,004.8	88	113	51	75
159	Richmond Co	567.6	571.6	130	132	91	93
161	Roanoke Co	1,352.3	1,647.5	81	65	45	31
163	Rockbridge Co	1,312.0	1,365.0	83	87	47	49
165	Rockingham Co	598.1	504.2	128	133	89	94
167	Russell Co	669.9	1,372.2	125	86	86	48
169	Scott Co	850.3	1,872.6	111	58	73	24
171	Shenandoah Co	1,134.7	1,341.0	93	88	56	50
173	Smyth Co	1,366.3	2,062.9	80	46	44	12
175	Southampton Co	1,584.5	1,729.3	69	62	33	28
177	Spotsylvania Co	2,474.7	1,927.6	42	56	8	22
179	Stafford Co	1,902.7	1,401.2	60	84	25	47
181	Surry Co	1,552.2	1,005.0	71	112	35	74
183	Sussex Co	1,319.6	1,596.4	82	70	46	36
185	Tazewell Co	2,257.9	2,685.3	48	32	13	3
187	Warren Co	2,501.3	2,412.8	41	38	7	6
191	Washington Co	1,393.3	2,589.8	78	35	42	4
193	Westmoreland Co	1,268.1	1,016.2	84	111	48	73
195	Wise Co	1,104.0	2,039.0	97	47	60	13
197	Wythe Co	2,525.5	1,477.0	38	78	5	41
199	York Co	1,874.0	1,966.2	61	52	26	18

Appendix B – Virginia Property Index Crime Rate and Ranking by Locality, 2000 and 2009 Source: DCJS

Overall Rank 1=highest crime rate statewide, 134=lowest crime rate statewide

(Note: 2000 rank includes city of Clifton Forge; rank 135 will be lowest 2000 overall ranking. Clifton Forge reverted to town status in 2001).

City Rank 1=highest crime rate among cities, 39=lowest crime rate among the 39 cities

(Note: 2000 rank includes city of Clifton Forge; rank 40 will be lowest 2000 city ranking).

Cities

FIPS	Locality	2000 Rate	2009 Rate	2000 Overall Rank	2009 Overall Rank	2000 City Rank	2009 City Rank
510	Alexandria C	3,894.5	2,316.9	21	41	20	34
515	Bedford C	2,603.6	3,386.2	36	22	33	22
520	Bristol C	2,510.5	3,523.7	40	19	34	19
530	Buena Vista C	456.8	1,556.6	132	72	40	36
540	Charlottesville C	4,753.2	5,104.5	11	7	11	7
550	Chesapeake C	3,444.1	3,519.7	27	20	26	20
560	Clifton Forge C	1,632.1	n/a	66	n/a	36	n/a
570	Colonial Heights C	7,030.8	4,773.7	3	9	3	9
580	Covington C	2,760.6	2,937.8	34	29	32	28
590	Danville C	4,042.5	5,100.4	14	8	14	8
595	Emporia C	6,743.2	5,766.9	4	3	4	3
600	Fairfax C	3,256.1	2,514.0	30	36	28	32
610	Falls Church C	3,941.4	2,689.7	17	31	17	29
620	Franklin C	2,779.8	4,245.3	33	13	31	13
630	Fredericksburg C	5,513.8	4,768.2	6	10	6	10
640	Galax C	3,715.1	4,427.7	23	11	22	11
650	Hampton C	3,409.0	3,589.0	28	17	27	17
660	Harrisonburg C	3,453.4	2,637.7	26	33	25	30
670	Hopewell C	4,785.2	3,571.1	10	18	10	18
678	Lexington C	1,252.4	823.9	87	125	37	39
680	Lynchburg C	3,766.0	3,062.0	22	27	21	26
683	Manassas C	3,643.1	2,963.0	24	28	23	27
685	Manassas Park C	2,837.7	1,518.6	32	77	30	37
690	Martinsville C	4,469.4	3,375.7	13	23	13	23
700	Newport News C	4,658.6	3,618.5	12	16	12	16
710	Norfolk C	5,983.3	5,385.2	5	5	5	5
720	Norton C	5,302.3	7,030.1	8	2	8	2
730	Petersburg C	7,071.7	7,137.9	2	1	2	1
735	Poquoson C	734.9	1,388.8	118	85	39	38
740	Portsmouth C	5,423.4	5,753.0	7	4	7	4
750	Radford C	876.5	3,401.2	108	21	38	21
760	Richmond C	7,226.9	4,213.5	1	14	1	14
770	Roanoke C	3,967.9	5,309.6	15	6	15	6
775	Salem C	2,291.2	3,111.7	45	25	35	24
790	Staunton C	2,850.8	2,321.8	31	40	29	33
800	Suffolk C	3,960.6	2,629.9	16	34	16	31
810	Virginia Beach C	3,913.2	3,069.7	20	26	19	25
820	Waynesboro C	3,924.2	3,790.1	18	15	18	15
830	Williamsburg C	3,608.9	1,569.4	25	71	24	35
840	Winchester C	4,854.8	4,412.0	9	12	9	12

Appendix C – Virginia Drug Arrest Rate and Ranking by Locality, 2000 and 2009 Source: DCJS

Overall Rank: 1=highest arrest rate statewide, 134=lowest arrest rate statewide

(Note: 2000 rank includes city of Clifton Forge; rank 135 will be lowest 2000 overall ranking. Clifton Forge reverted to town status in 2001).

County Rank: 1=highest arrest rate among counties, 95=lowest arrest rate among the 95 counties

Counties (continued on next page)

FIPS	Locality	2000 Rate	2009 Rate	2000 Overall Rank	2009 Overall Rank	2000 County Rank	2009 County Rank
001	Accomack Co	426.1	359.2	52	80	23	48
003	Albemarle Co	278.2	352.7	86	83	50	51
005	Alleghany Co	396.0	784.3	57	22	28	5
007	Amelia Co	110.7	132.5	126	128	86	89
009	Amherst Co	363.8	475.6	63	58	31	28
011	Appomattox Co	117.4	272.1	124	100	84	66
013	Arlington Co	307.9	210.2	78	112	43	76
015	Augusta Co	126.8	161.8	122	124	82	85
017	Bath Co	66.2	169.2	133	122	93	83
019	Bedford Co	145.9	162.1	120	123	80	84
021	Bland Co	1,559.7	323.6	3	89	2	56
023	Botetourt Co	316.4	710.1	76	28	42	8
025	Brunswick Co	320.3	374.9	74	79	41	47
027	Buchanan Co	1,810.0	389.7	2	74	1	42
029	Buckingham Co	179.4	379.4	109	76	69	44
031	Campbell Co	116.5	318.8	125	90	85	57
033	Caroline Co	156.3	357.6	117	82	77	50
035	Carroll Co	289.3	303.4	83	94	47	60
036	Charles City Co	48.8	306.2	134	93	94	59
037	Charlotte Co	91.6	282.9	131	97	91	63
041	Chesterfield Co	609.3	527.5	28	52	9	24
043	Clarke Co	378.7	236.7	60	104	29	70
045	Craig Co	156.3	337.1	118	87	78	55
047	Culpeper Co	551.6	375.7	34	78	11	46
049	Cumberland Co	179.3	382.6	110	75	70	43
051	Dickenson Co	82.2	432.7	132	63	92	33
053	Dinwiddie Co	302.6	584.5	79	42	44	15
057	Essex Co	420.0	457.3	54	59	25	29
059	Fairfax Co	136.5	212.9	121	111	81	75
061	Fauquier Co	526.7	552.7	37	50	12	23
063	Floyd Co	32.6	37.5	135	134	95	95
065	Fluvanna Co	92.1	137.7	130	127	90	88
067	Franklin Co	201.1	214.5	104	110	65	74
069	Frederick Co	291.0	407.1	82	71	46	40
071	Giles Co	326.1	423.5	73	69	40	38
073	Gloucester Co	423.8	221.0	53	108	24	73
075	Goochland Co	173.0	351.4	114	84	74	52
077	Grayson Co	119.7	258.7	123	101	83	67
079	Greene Co	961.8	152.4	10	126	3	87
081	Greensville Co	188.8	980.3	106	13	67	2
083	Halifax Co	171.5	500.8	115	54	75	25
085	Hanover Co	514.6	559.2	40	49	14	22
087	Henrico Co	450.6	347.3	49	85	21	53
089	Henry Co	208.8	156.0	101	125	62	86
091	Highland Co	173.8	92.2	113	132	73	93
093	Isle of Wight Co	526.2	280.9	38	98	13	64
095	James City Co	471.0	427.4	43	68	16	37
097	King & Queen Co	272.9	131.4	87	129	51	90

Appendix C – Virginia Drug Arrest Rate and Ranking by Locality, 2000 and 2009 Source: DCJS

Overall Rank: 1=highest arrest rate statewide, 134=lowest arrest rate statewide

(Note: 2000 rank includes city of Clifton Forge; rank 135 will be lowest 2000 overall ranking. Clifton Forge reverted to town status in 2001).

County Rank: 1=highest arrest rate among counties, 95=lowest arrest rate among the 95 counties

Counties (continued)

FIPS	Locality	2000 Rate	2009 Rate	2000 Overall Rank	2009 Overall Rank	2000 County Rank	2009 County Rank
099	King George Co	260.4	443.9	89	62	52	32
101	King William Co	398.9	357.7	56	81	27	49
103	Lancaster Co	256.7	186.0	90	118	53	80
105	Lee Co	230.8	429.3	95	67	57	36
107	Loudoun Co	218.8	297.7	99	95	60	61
109	Louisa Co	282.0	237.4	85	103	49	69
111	Lunenburg Co	297.2	610.7	80	38	45	14
113	Madison Co	363.8	90.4	64	133	32	94
115	Mathews Co	565.8	671.4	30	35	10	11
117	Mecklenburg Co	201.5	377.7	103	77	64	45
119	Middlesex Co	353.8	496.0	67	55	35	26
121	Montgomery Co	331.5	338.0	71	86	39	54
125	Nelson Co	217.5	187.6	100	116	61	79
127	New Kent Co	432.6	683.1	51	33	22	10
131	Northampton Co	855.3	390.5	15	73	4	41
133	Northumberland Co	233.9	226.5	94	106	56	71
135	Nottoway Co	338.4	446.0	70	61	38	31
137	Orange Co	220.1	190.2	98	115	59	78
139	Page Co	107.9	431.2	127	64	87	34
141	Patrick Co	455.5	420.3	47	70	19	39
143	Pittsylvania Co	161.5	311.1	116	92	76	58
145	Powhatan Co	174.0	278.0	112	99	72	65
147	Prince Edward Co	204.0	193.1	102	114	63	77
149	Prince George Co	344.1	288.8	68	96	36	62
153	Prince William Co	619.3	634.7	27	36	8	12
155	Pulaski Co	417.0	572.8	55	46	26	19
157	Rappahannock Co	241.5	430.1	93	65	55	35
159	Richmond Co	174.3	173.4	111	121	71	82
161	Roanoke Co	228.6	574.2	97	45	58	18
163	Rockbridge Co	790.7	492.4	17	56	5	27
165	Rockingham Co	341.7	222.3	69	107	37	72
167	Russell Co	92.6	578.0	129	44	89	17
169	Scott Co	153.3	793.9	119	20	79	4
171	Shenandoah Co	751.2	782.9	19	23	6	6
173	Smyth Co	465.1	775.3	45	24	18	7
175	Southampton Co	470.7	180.7	44	119	17	81
177	Spotsylvania Co	362.7	628.6	65	37	33	13
179	Stafford Co	711.8	709.3	22	29	7	9
181	Surry Co	250.5	94.2	92	131	54	92
183	Sussex Co	453.8	1,245.0	48	6	20	1
185	Tazewell Co	282.9	572.0	84	47	48	20
187	Warren Co	180.6	898.9	108	16	68	3
191	Washington Co	98.7	452.1	128	60	88	30
193	Westmoreland Co	357.8	114.7	66	130	34	91
195	Wise Co	200.7	239.6	105	102	66	68
197	Wythe Co	376.5	567.5	61	48	30	21
199	York Co	487.5	580.3	41	43	15	16

Appendix C – Virginia Drug Arrest Rate and Ranking by Locality, 2000 and 2009 Source: DCJS

Overall Rank 1=highest crime rate statewide, 134=lowest crime rate statewide

(Note: 2000 rank includes city of Clifton Forge; rank 135 will be lowest 2000 overall ranking. Clifton Forge reverted to town status in 2001).

City Rank 1=highest crime rate among cities, 39=lowest crime rate among the 39 cities

(Note: 2000 rank includes city of Clifton Forge; rank 40 will be lowest 2000 city ranking).

Cities

FIPS	Locality	2000 Rate	2009 Rate	2000 Overall Rank	2009 Overall Rank	2000 City Rank	2009 City Rank
510	Alexandria C	186.3	329.5	107	88	40	33
515	Bedford C	434.2	801.4	50	19	29	16
520	Bristol C	789.2	1,335.2	18	4	13	4
530	Buena Vista C	556.8	177.2	33	120	23	39
540	Charlottesville C	718.6	599.5	21	40	15	26
550	Chesapeake C	685.4	511.9	23	53	16	29
560	Clifton Forge C	1,285.8	n/a	4	n/a	2	n/a
570	Colonial Heights C	809.9	1,704.9	16	1	12	1
580	Covington C	635.4	198.0	26	113	19	37
590	Danville C	364.9	951.2	62	14	32	12
595	Emporia C	1,259.1	1,579.9	6	2	4	2
600	Fairfax C	268.8	186.2	88	117	37	38
610	Falls Church C	252.2	315.2	91	91	38	34
620	Franklin C	1,283.1	541.5	5	51	3	28
630	Fredericksburg C	1,826.0	1,210.9	1	7	1	6
640	Galax C	537.0	689.3	36	32	25	23
650	Hampton C	481.5	786.2	42	21	27	17
660	Harrisonburg C	551.4	706.1	35	30	24	21
670	Hopewell C	577.9	772.1	29	25	20	18
678	Lexington C	308.9	214.5	77	109	35	36
680	Lynchburg C	956.9	1,097.9	11	11	8	10
683	Manassas C	296.2	398.2	81	72	36	32
685	Manassas Park C	730.9	813.9	20	18	14	15
690	Martinsville C	455.6	680.8	46	34	28	24
700	Newport News C	930.0	1,201.1	13	8	10	7
710	Norfolk C	319.3	230.4	75	105	34	35
720	Norton C	667.4	1,261.3	25	5	18	5
730	Petersburg C	564.4	1,461.0	31	3	21	3
735	Poquoson C	385.1	754.9	59	26	31	19
740	Portsmouth C	874.4	703.8	14	31	11	22
750	Radford C	982.5	1,108.1	9	10	7	9
760	Richmond C	992.9	1,029.2	8	12	6	11
770	Roanoke C	950.4	1,159.8	12	9	9	8
775	Salem C	520.5	718.3	39	27	26	20
790	Staunton C	229.8	902.0	96	15	39	13
800	Suffolk C	331.1	489.9	72	57	33	30
810	Virginia Beach C	559.5	429.6	32	66	22	31
820	Waynesboro C	675.6	602.8	24	39	17	25
830	Williamsburg C	395.3	589.9	58	41	30	27
840	Winchester C	1,064.8	859.0	7	17	5	14

Appendix D – Violent and Property Index Crime Rate Rankings Nationally, 2009 Source: FBI

Virginia’s 2009 violent crime rate** ranked 44 out of 50, between Wyoming and Utah.

Virginia’s 2009 property crime rate** ranked 38 out of 50, between Montana and Maine.

Rank 1=Highest Rate Rank 50 = Lowest Rate

State	2009 Violent Crime Rate	Rank
Nevada	702.2	1
South Carolina	670.8	2
Tennessee	667.7	3
Delaware	636.6	4
Alaska	633.0	5
Louisiana	620.0	6
New Mexico	619.0	7
Florida	612.5	8
Maryland	589.9	9
Arkansas	517.7	10
Oklahoma	501.1	11
Illinois	497.2	12
Michigan	497.0	13
Missouri	491.8	14
Texas	490.9	15
California	472.0	16
Massachusetts	457.1	17
Alabama	449.8	18
Georgia	426.1	19
Arizona	408.3	20
North Carolina	404.3	21
Kansas	400.1	22
New York	384.7	23
Pennsylvania	380.5	24
Colorado	337.8	25
Indiana	333.2	26
Ohio	332.1	27
Washington	331.0	28
New Jersey	311.5	29
Connecticut	298.7	30
West Virginia	296.5	31
Nebraska	281.6	32
Mississippi	281.3	33
Iowa	279.2	34
Hawaii	274.8	35
Kentucky	258.7	36
Wisconsin	257.0	37
Oregon	254.7	38
Montana	253.6	39
Rhode Island	252.6	40
Minnesota	243.9	41
Idaho	228.4	42
Wyoming	228.2	43
Virginia	226.8	44
Utah	212.7	45
North Dakota	200.7	46
South Dakota	185.6	47
New Hampshire	159.6	48
Vermont	131.4	49
Maine	119.8	50

State	2009 Property Crime Rate	Rank
Texas	4,015.5	1
South Carolina	3,888.6	2
Florida	3,840.8	3
Louisiana	3,794.6	4
Arkansas	3,773.7	5
Alabama	3,772.4	6
Tennessee	3,754.1	7
New Mexico	3,735.8	8
North Carolina	3,668.1	9
Washington	3,666.9	10
Georgia	3,666.6	11
Hawaii	3,661.2	12
Oklahoma	3,573.8	13
Arizona	3,556.5	14
Missouri	3,385.3	15
Delaware	3,349.6	16
Utah	3,275.4	17
Ohio	3,270.9	18
Kansas	3,207.8	19
Maryland	3,200.7	20
Indiana	3,116.2	21
Nevada	3,055.6	22
Oregon	2,967.1	23
Mississippi	2,953.3	24
Alaska	2,946.0	25
Michigan	2,837.8	26
Nebraska	2,761.5	27
Illinois	2,736.9	28
California	2,731.5	29
Colorado	2,666.2	30
Minnesota	2,641.0	31
Wyoming	2,637.3	32
Rhode Island	2,610.8	33
Wisconsin	2,608.2	34
West Virginia	2,526.7	35
Kentucky	2,512.7	36
Montana	2,464.0	37
Virginia	2,428.8	38
Maine	2,403.5	39
Vermont	2,401.4	40
Connecticut	2,335.8	41
Iowa	2,308.7	42
Massachusetts	2,304.0	43
Pennsylvania	2,201.6	44
New Hampshire	2,161.0	45
New Jersey	2,079.7	46
Idaho	1,988.7	47
New York	1,936.0	48
North Dakota	1,932.8	49
South Dakota	1,719.4	50

**Virginia crime rates published by the FBI differ slightly from crime rates published by Virginia State Police and DCJS.

Appendix D - Drug Arrest Rate Rankings Nationally, 2009

Source: FBI

Virginia's 2009 drug arrest rate** ranked 35 out of 50, between Rhode Island and Ohio.

Rank 1=Highest Rate Rank 50 = Lowest Rate

State	2009 Drug Arrest Rate	Rank
Illinois	1,448.1	1
Maryland	909.9	2
Mississippi	811.9	3
Kentucky	808.2	4
Louisiana	802.2	5
Florida	788.9	6
Tennessee	732.4	7
California	684.6	8
Nevada	666.5	9
West Virginia	666.5	10
Delaware	650.4	11
Missouri	637.2	12
South Carolina	626.5	13
New Jersey	615.6	14
Nebraska	611.5	15
Texas	594.4	16
Georgia	582.2	17
Oklahoma	575.9	18
New York	564.8	19
Arizona	539.3	20
Wyoming	520.3	21
Connecticut	504.7	22
Indiana	495.8	23
North Carolina	476.9	24
Arkansas	453.9	25
Wisconsin	453.6	26
Maine	447.8	27
Pennsylvania	444.8	28
Oregon	428.2	29
South Dakota	425.0	30
New Mexico	423.0	31
Alabama	412.3	32
Utah	408.6	33
Rhode Island	400.8	34
Virginia	398.1	35
Ohio	379.8	36
Idaho	378.5	37
Colorado	368.2	38
Michigan	364.8	39
Kansas	348.3	40
New Hampshire	346.4	41
Washington	339.3	42
Minnesota	334.5	43
Iowa	303.8	44
North Dakota	302.6	45
Alaska	300.4	46
Vermont	236.6	47
Massachusetts	197.8	48
Hawaii	178.7	49
Montana	169.9	50

**Virginia drug arrest rates published by the FBI differ from arrest rates published by Virginia State Police and DCJS.

Data Sources

Virginia, U.S. & Border States index crime rates and drug arrest rates: *Crime In The United States, 2000* through *Crime In The United States, 2009*, U.S. Department of Justice, FBI

Virginia index crime rates and drug arrest rates statewide, by region and by locality calculated by DCJS using Incident-Based Reporting System Repository electronic data files from VSP, converted to Uniform Crime Reporting Summary format and adjusted for missing and underreported data by DCJS Research Center; population estimates from Weldon Cooper Center for Public Service, University of Virginia.